




TRITON 7500/3

THE DEEP DIVER

Capable of diving 1.4 miles, the TRITON 7500/3 is the world's deepest diving acrylic hulled submersible.

 3 Passengers
Capacity

 10+ Hours
Endurance

 LiFePO4
Battery Technology

 7,500 FT 2,286 M
Depth

 24,960 lb 11,200 kg
Dry Weight

 8.5 ft 2.6 m
Height

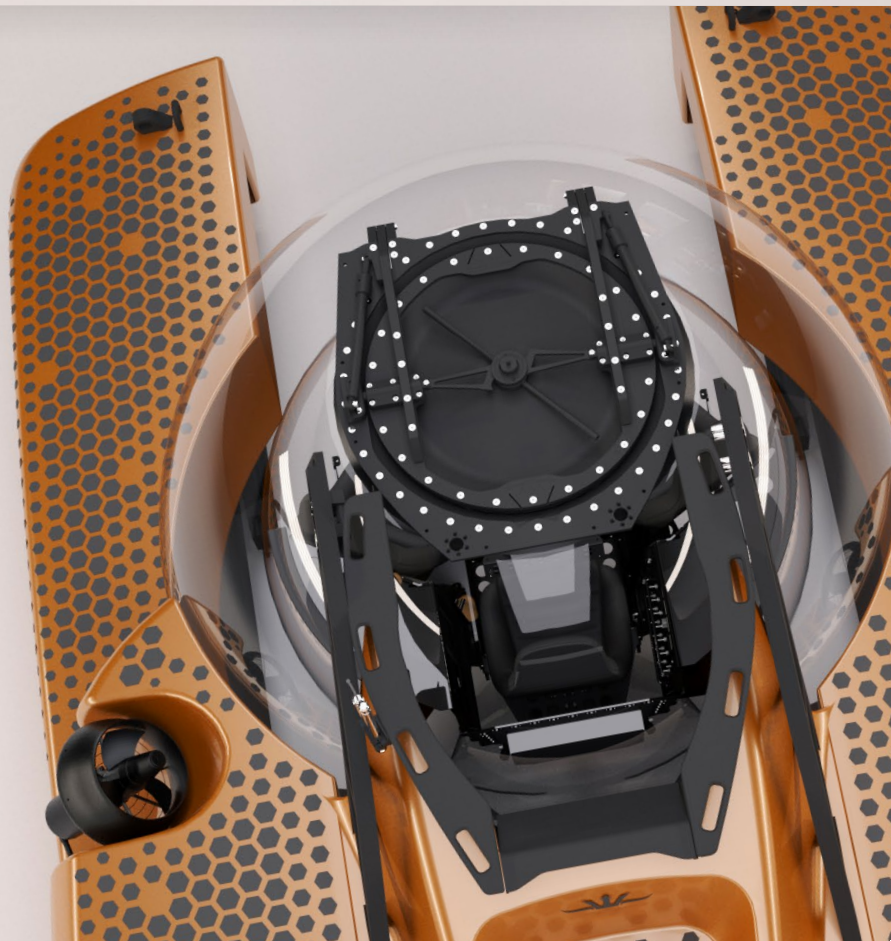
OVERVIEW

The TRITON 7500/3 achieves its remarkable 7,500ft (2,286m) diving depth by utilizing a pressure hull thickness of 300mm (11.8in) and through the use of certified, aircraft-grade materials, lithium phosphate battery technology, and pressure-balanced-oil-filled sub-systems.

The TRITON 7500/3 builds on the venerable TRITON 3300/3 design, sharing the spacious, three passenger interior configuration with luxurious leather sports seating as well as Triton's proprietary Easy-Entry Hatch System, enabling passengers to enter the submersible with ease.

Observation is fundamental to scientific inquiry. The fully transparent, acrylic pressure hull offers pilot and passengers an unrivaled, uninterrupted view of the wonders outside.

The versatile lift points on the TRITON 7500/3 have been configured for launch and recovery using either tender-style davits found in yacht garages, or deck-mounted cranes and A-Frames.





TECHNICAL DETAILS

The tables below show the general specifications for the TRITON 7500/3.

GENERAL

Depth	7,500 ft / 2,286 m
Payload	1,100 lb / 500 kg
Crew	Pilot + 2 Pax
Speed	3 kn
Endurance	10+ hours
Main Ballast	8,800 lb / 4,000 kg
Variable Ballast	397 lb / 180 kg

SIZE & WEIGHT

Length	15.3 ft / 4.65 m
Width	11.5 ft / 3.5 m
Height	8.5 ft / 2.6 m
Weight	24,960 lb / 11,200 kg
Pressure Hull Inner ø	69.5 in / 1,766 mm
Pressure Hull Volume	2,883 l
Hatch Inner ø	21.7 in / 550 mm

SYSTEMS

24 V Supply	Dual Supply + Emergency
Main Battery	40 kWh
Main Thrusters	2 x 12.5 kW
Vertran Thrusters	2 x 12.5 kW
Control	Joystick, Touch Screen + Manual Override
External Lights	6+ x 20,000 lumen LED
Life Support	Oxygen & CO ₂ Scrubber



+1 (772) 770-1995 +1 (772) 589-1011 info@tritonsubs.com