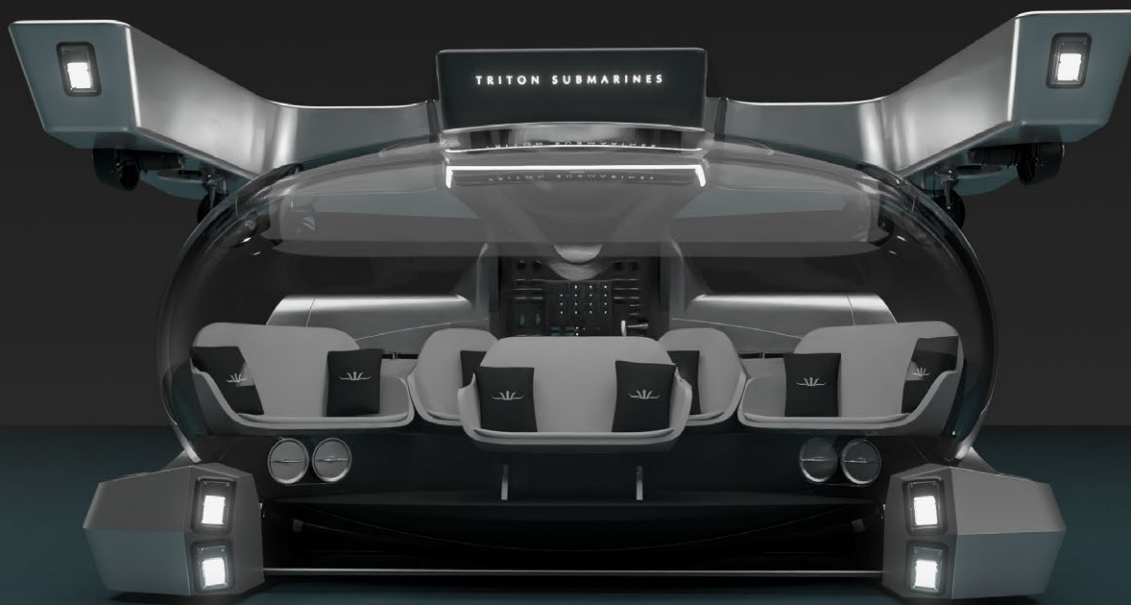


TRITON 660/9

ADVANCED VERSATILE ACRYLICS

Entertainment-focused underwater experiences



 9 Passengers
Max. Capacity

 12 Hours
Endurance

 LiFePO4
Battery Technology

 660 ft 200 m
Depth

 23,810 lb 10,800 kg
Dry Weight

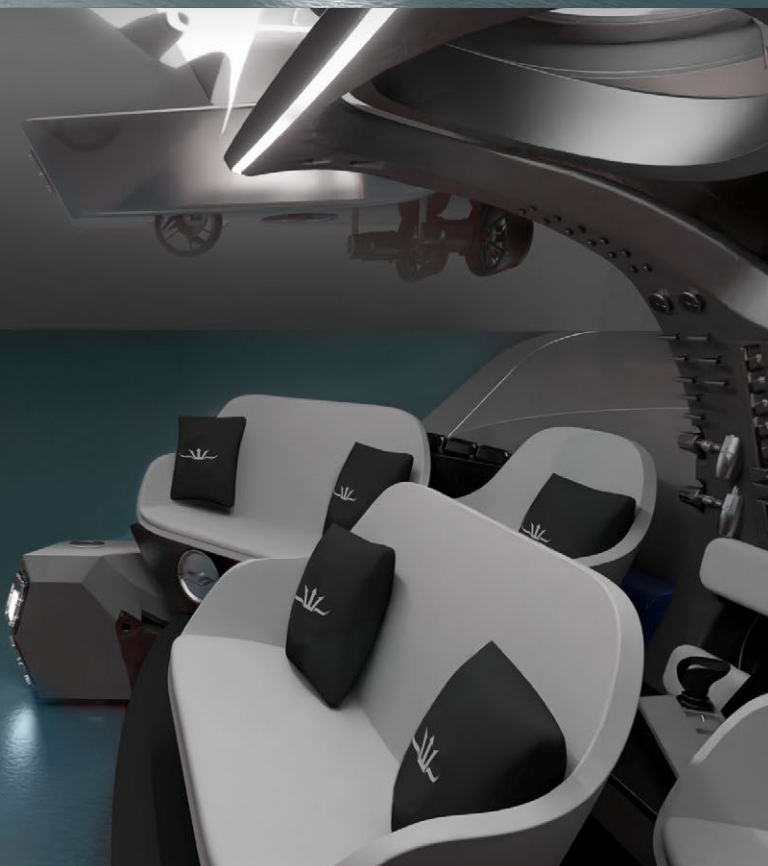
 7.55 ft 2.3 m
Height

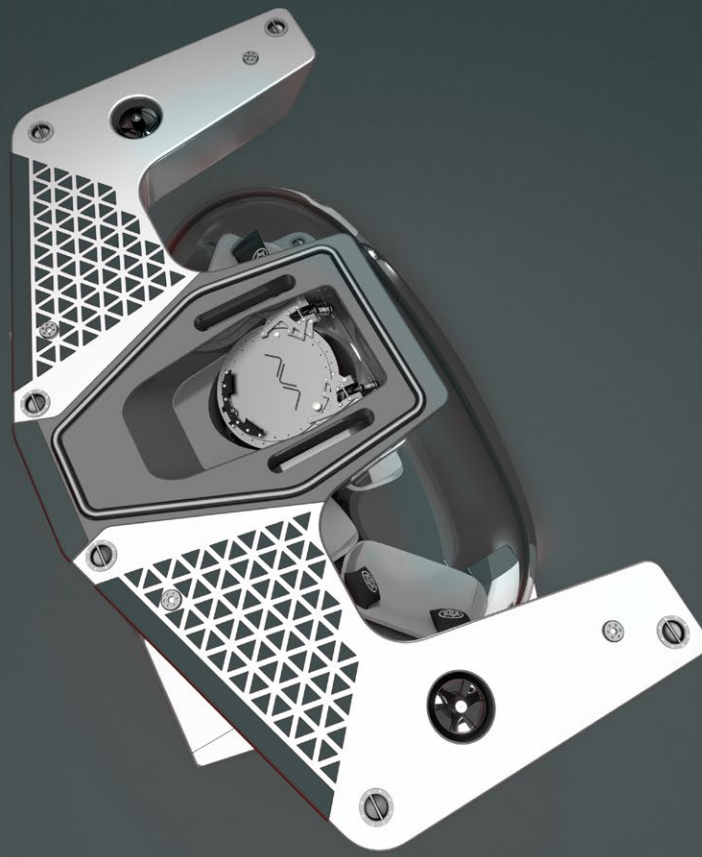
OVERVIEW

The revolutionary Triton 660/9 AVA^(Patent Pending) is the most technologically advanced and versatile large-capacity luxury submersible available in the world today.

The flexible and spacious interior comfortably seats up to nine adults, or seven adults and four children, as they embark on a shared underwater adventure to depths of 200 m (656 ft).

Easily configurable, even between dives, the submersible can quickly be turned into a cocktail bar, a wedding suite, a fine dining venue or even a subsea casino - the versatility offered by this vehicle is limited only by imagination, creating the perfect platform for incredible, immersive ocean experiences.





TECHNICAL DETAILS

The tables below show the general specifications for the TRITON 660/9 AVA. Additional items can be ordered as options. Details can be found in our equipment flier.

GENERAL

Depth	660 ft / 200 m
Passengers	1 Pilot + 8 Adults / 1 Pilot + 6 Adults & 4 Children
Payload	1,697 lb / 765 kg
Min. Payload	1,135 lb / 515 kg
Speed	3 kn
Endurance	12 hours
Hatch Inner ø	23.6 in / 600 mm

SIZE & WEIGHT

Length	9.5 ft / 2,900 mm
Width	14.8 ft / 4,500 mm
Height	7.55 ft / 2,300 mm
Weight	23,810 lb / 10,800 kg
Dynamic Passenger Compensation Ballast	550 lb / 250 kg
Variable Ballast	550 lb / 250 kg
Pressure Hull Internal Volume	6,300 l

SYSTEMS

24 V Supply	Dual Supply + Emergency
Main Battery	57 kWh
Main Thrusters	4 x 5.5 kW
Maneuvering Thrusters	4 x 5.5 kW
Control	Joystick, Touchscreen & Manual Override
External Lights	8+ x 20,000 lumen LED
Life Support	Oxygen & CO ₂ Scrubber



📞 +1 (772) 770-1995 📅 +1 (772) 589-1011 ✉ info@tritonsubs.com

