

# TRITON 660/9

ADVANCED VERSATILE ACRYLICS

Entertainment-focused underwater experiences



9 Passengers  
Max. Capacity

12 Hours  
Endurance

LiFePO4  
Battery Technology

660 ft 200 m  
Depth

23,810 lb 10,800 kg  
Dry Weight

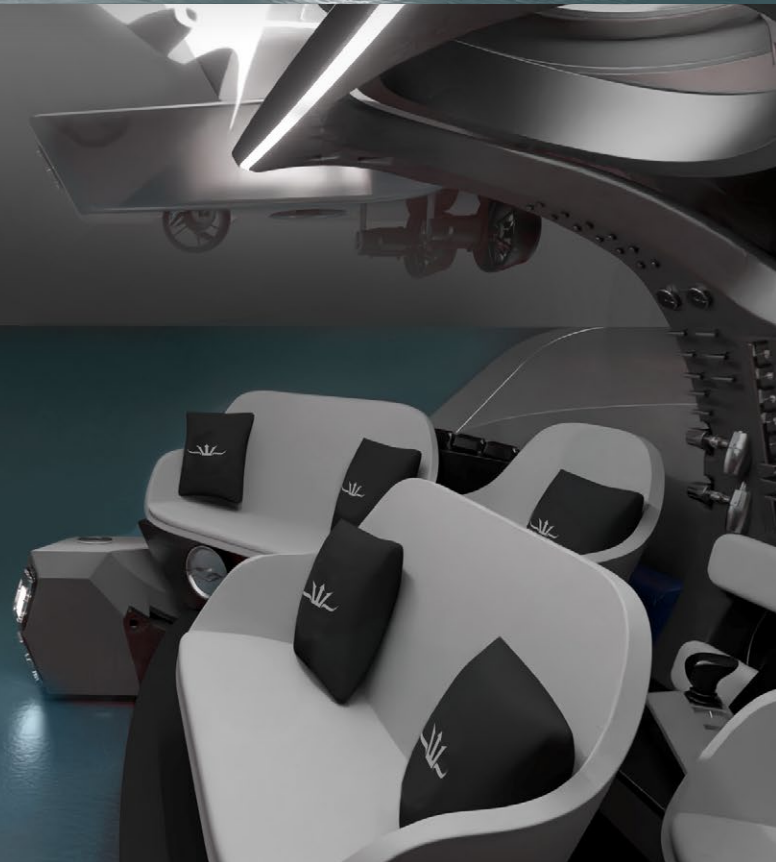
7.55 ft 2.3 m  
Height

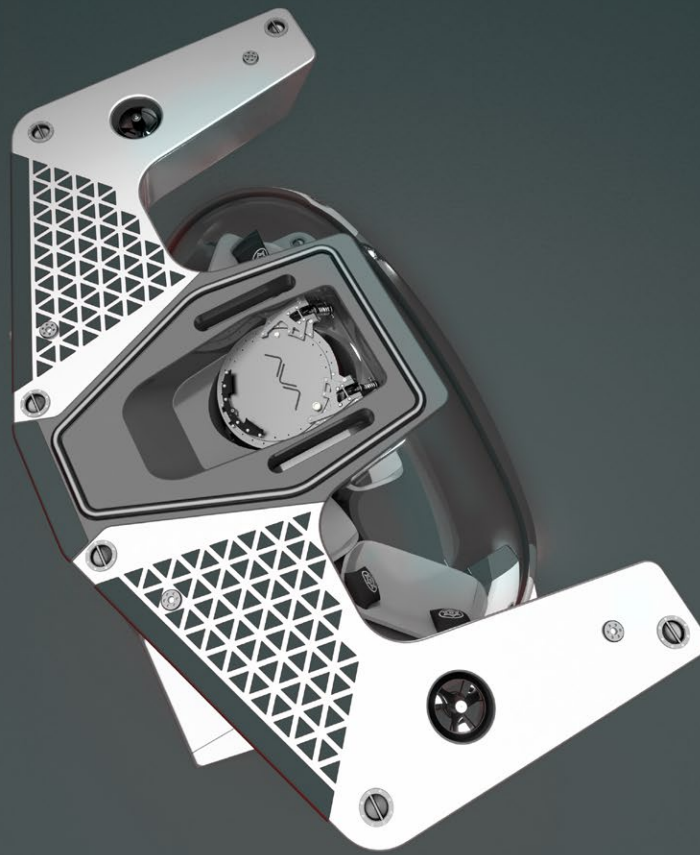
## OVERVIEW

The revolutionary Triton 660/9 AVA<sup>(Patent Pending)</sup> is the most technologically advanced and versatile large-capacity luxury submersible available in the world today.

The flexible and spacious interior comfortably seats up to nine adults, or seven adults and four children, as they embark on a shared underwater adventure to depths of 200 m (656 ft).

Easily configurable, even between dives, the submersible can be quickly converted between a cocktail bar, a wedding suite, a fine dining venue or even a subsea casino - the versatility offered by this vehicle is limited only by imagination, creating the perfect platform for incredible, immersive ocean experiences.





## TECHNICAL DETAILS

The tables below show the general specifications for the TRITON 660/9 AVA. Additional items can be ordered as options. Details can be found in our equipment flier.

### GENERAL

Depth	660 ft / 200 m
Passengers	1 Pilot + 8 Adults / 1 Pilot + 6 Adults & 4 Children
Payload	1,697 lb / 765 kg
Min. Payload	1,135 lb / 515 kg
Speed	3 kn
Endurance	12 hours
Hatch Inner ø	23.6 in / 600 mm

### SIZE & WEIGHT

Length	9.5 ft / 2,900 mm
Width	14.8 ft / 4,500 mm
Height	7.55 ft / 2,300 mm
Weight	23,810 lb / 10,800 kg
Dynamic Passenger Compensation Ballast	550 lb / 250 kg
Variable Ballast	550 lb / 250 kg
Pressure Hull Internal Volume	6,420 l

### SYSTEMS

24 V Supply	Dual Supply + Emergency
Main Battery	57 kWh
Main Thrusters	4 x 5.5 kW
Maneuvering Thrusters	4 x 5.5 kW
Control	Joystick, Touchscreen & Manual Override
External Lights	8+ x 20,000 lumen LED
Life Support	Oxygen & CO <sub>2</sub> Scrubber



📞 +1 (772) 770-1995 📅 +1 (772) 589-1011 ✉ info@tritonsubs.com

