




TRITON 36000/2


FULL OCEAN DEPTH

A masterpiece of design, technology and precision engineering, the TRITON 36000/2 is a two-person manned submersible capable of diving to the deepest and least accessible region of the world's oceans.

 2 Passengers
Capacity

 16+ Hours
Endurance

 LiFePO4
Battery Technology

 Unlimited
Depth

 25,700 lb 11,700 kg
Dry Weight

 12.2 ft 3.7 m
Height

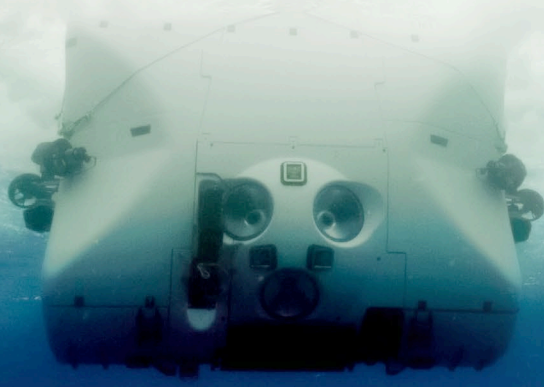
OVERVIEW

Designed to slip vertically through the water column, the TRITON 36000/2 can reach the deepest point in the ocean in less than two and a half hours.

Weighing just 11.7 tons, the submersible is far lighter than previous deep diving vehicles, an important consideration during launch and recovery. An array of 10 powerful electric thrusters provide for motion in all directions. Energy is provided from a pioneering set of full ocean depth certified Li-Fe-P batteries supplying 65 kWh of power. Four situational awareness cameras ensure the pilot has an excellent appreciation of the surroundings as well as a commanding view of the subsea environment through the three generously sized acrylic viewports.

The submersible has been designed with simplicity as the primary objective. Multiple, fail-safe systems provide additional peace of mind, while certification from DNV-GL provides the reassurance of third-party design and engineering accreditation for the first time ever in a full ocean depth manned submersible.





TECHNICAL DETAILS

The tables below show the general specifications for the TRITON 36000/2.

GENERAL

Depth	36,000 ft / 11,000 m
Payload	485 lb / 220+ kg
Crew	Pilot + 1 Pax
Speed	3 kn
Endurance	16+ hours
Surface Ballast	75.93 cu.ft / 2,150 l
Variable Ballast	220 lb / 100 kg

SIZE & WEIGHT

Length	15 ft / 4.6 m
Width	6.2 ft / 1.9 m
Height	12.2 ft / 3.7 m
Weight	25,700 lb / 11,700 kg
Pressure Hull Inner ø	59 in / 1,500 mm
Hatch Inner ø	17.7 in / 450 mm

SYSTEMS

24 V Supply	Dual Supply + Emergency
Main Battery	65 kWh
Main Thrusters	4 x 5.5 kW
Vertical Thrusters	4 x 5.5 kW
Maneuvering Thrusters	2 x 5.5 kW
Control	Joystick, Touch Screen + Manual Override
External Lights	10 x 20,000 lumen LED
Life Support	Oxygen & CO ₂ Scrubber



+1 (772) 770-1995 +1 (772) 589-1011 info@tritonsubs.com